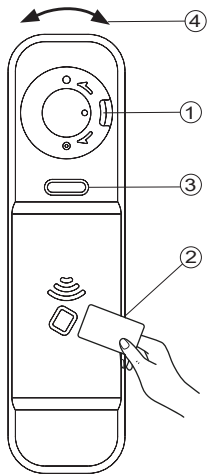


# AL7005 Operation Instruction

## Setting & Locking & Unlocking



### Add a User Card

- ① Touch the Setting Card to the front of the lock.  
(When you hear 2 'Beep' sounds and see the green LED flash, it means you've entered setup mode.)
- ② In setup mode:
  - \* Register 1 card: Touch an unregistered User Card to the front of the lock. Hear 1 'Beep' sounds and the Green LED continue flash.
  - \* Register 2 cards: Touch an unregistered User Card to the front of the lock. Hear 1 'Beep' sounds and the Green LED continue flash. Touch another card to register.
- ③ The LED stops flashing, the setting is complete.

※ Note: Please ensure that the lock is in the OPEN position (indicated by the color green) before registering.

※ Note: The maximum number of cards that can be registered is 2. Registering a third card will erase all the original registered card.

### To Lock

- ① Lock in the OPEN position (indicated by the color green)
- ② Touch the User Card to the front of the lock
- ③ Rotate the knob to lock the door

### To Unlock

- ① Lock in the CLOSE position (indicated by the color red)
- ② Touch the User Card to the front of the lock
- ③ Rotate the knob to open the door

## Technical Specifications

- **Card Specifications** : 13.56 MHz frequency, ISO14443A RFID card
- **Battery** : 2 x AAA alkaline batteries
- **Low Battery Warning** : When the battery is running low, rotate the knob to the unlock/lock position, and the red light will flash three times. At this point, please replace the batteries as soon as possible. If the battery is totally out of power, then please use the Master Key to unlock and replace the new batteries.

## Forget the card or Urgent Condition

- If you lose the User Card and can't unlock the cabinet, then please contact customer service center.

## Light (LED) and Sound Instructions

Operation Instructions	LED Instructions	Sound Instructions
Setting Card Unlock	Green light flashes once	1 short beep
Setting Card detected in unlock status	Green light flashing	2 short beeps
Setting User Card	Green light flashes once	1 short beep
Setting Complete	Stop flashing	X
Touch the Setting Card without setting the User Card after 20 seconds	Stop flashing	X
User Card Lock/Unlock	Green light flashes once	1 short beep
Incorrect User Card Lock/Unlock	X	X
Touch the User card without turning the knob after 10 seconds	Red light flashes twice	2 short beeps
Low Battery Lock/Unlock	Green light flashes once, rotate the knob to the lock/unlock position, red light flashes 3 times	1 short beep