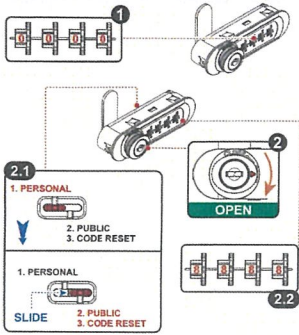
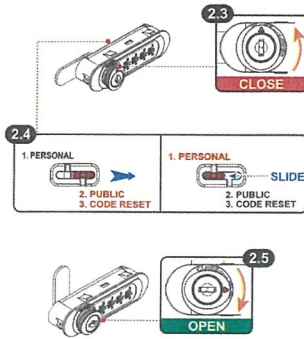


**OPERATING INSTRUCTIONS  
COMBI-PERSONAL (No. 821)**



1. The preset factory code is 0-0-0-0
2. To change the secret code, rotate the knob to OPEN position.
- 2.1 Slide the swap button to 3. CODE RESET
- 2.2 The new secret code can be reset, e.g. 8-8-8-8

7



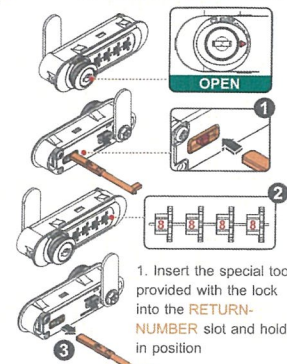
- 2.3 Rotate the knob to CLOSE position.
- 2.4 Slide the swap button to 1. PERSONAL
- 2.5 Rotate the knob back to OPEN position to complete the process.

Remarks: For Step 2, remove the cam should it obstruct the swap button.

8

**TO RECOVER THE SECRET CODE  
COMBI-PERSONAL (No. 821)**

▶ WHEN THE LOCK IS IN OPEN POSITION



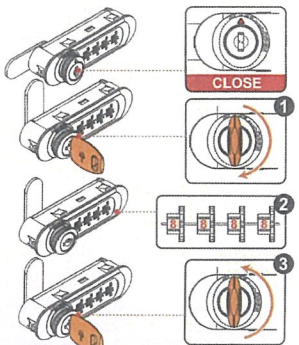
1. Insert the special tool provided with the lock into the RETURN-NUMBER slot and hold it in position
2. Turn each of the dials until it cannot move (all four dials)—to recover the forgotten secret code.
3. Pull the special tool out of the slot. The lock can now be used normally.

10

www.cyber-lock.com

9

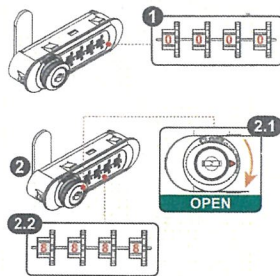
▶ WHEN THE LOCK IS IN LOCK POSITION



1. Insert the key into the knob and rotate it clockwise until stop.
2. Turn each of the dials until it cannot move (all four dials)—to recover the forgotten secret code.
3. Rotate the key counter-clockwise until stop and pull the key out. The lock can now be used normally.

11

**OPERATING INSTRUCTIONS  
COMBI-PUBLIC (No. 822)**

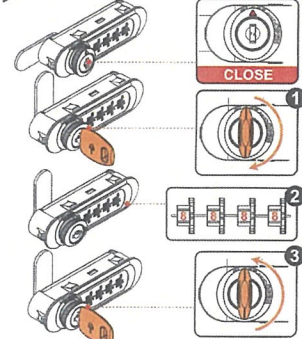


1. The preset factory code is 0-0-0-0
2. To change the secret code,
  - 2.1 Rotate the knob to OPEN position.
  - 2.2 The new secret code can be reset, e.g. 8-8-8-8. The process is complete.

12

**TO RECOVER THE SECRET CODE  
COMBI-PUBLIC (No. 822)**

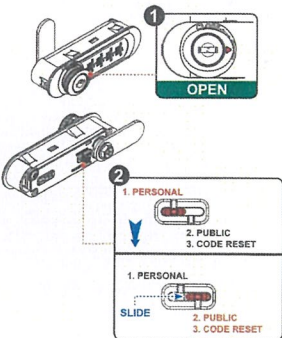
▶ WHEN THE LOCK IS IN LOCK POSITION



1. Insert the key into the knob and rotate it clockwise until stop.
2. Turn each of the dials until it cannot move (all four dials)—to recover the forgotten secret code.
3. Rotate the key counter-clockwise until stop and pull the key out. The lock can now be used normally.

14

**FROM COMBI-PERSONAL (No. 821) TO COMBI-PUBLIC (No. 822)**

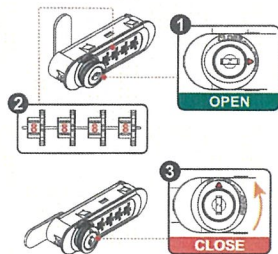


1. The lock is in OPEN position.
2. Slide the swap button to 2. PUBLIC to change the function to COMBI-PUBLIC

Remarks: For Step 2, remove the cam should it obstruct the swap button.

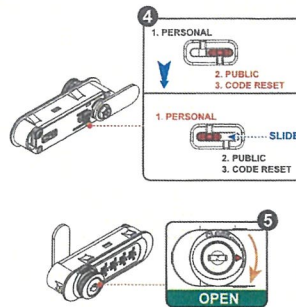
15

**FROM COMBI-PUBLIC (No. 822) TO COMBI-PERSONAL (No. 821)**



1. The lock is in OPEN position.
2. The secret code can be reset right away, e.g. 8-8-8-8
3. Rotate the knob to CLOSE position.

16



4. Slide the swap button to 1. PERSONAL
5. Rotate the knob to OPEN position to change the function to COMBI-PERSONAL

Remarks: For Step 4, remove the cam should it obstruct the swap button.

17